



*An example of a winning drawing being applied near a Philadelphia storm drain. Your work of art will act as a visual reminder that only rain should go down the storm drain!*

## Need Inspiration for the Contest?

The next time it's raining ask an adult to take you outside to follow the path of water to see where it goes. What color is the water? Is there anything being carried in it? Where did the water end up?

Enjoy your wet and wild adventure!

**Be sure to visit these websites for more information on making Philadelphia a greener city with cleaner waters:**

[www.phillywatersheds.org](http://www.phillywatersheds.org)  
[www.FairmountWaterWorks.org](http://www.FairmountWaterWorks.org)  
[www.DelawareEstuary.org](http://www.DelawareEstuary.org)



# YO STUDENTS!

## Here's How You Can Help Keep Philly's Water Clean



**Always pick up after pets!** That includes your doggie doo; put it in the toilet or trash can. Dog doo introduces disease-causing bacteria into our water supply.



**Don't litter!** By keeping litter off of the streets it doesn't wash into storm drains and end up in our streams!



**Collect leaves!** By bagging up or composting leaves it prevents them from clogging up storm drains and allows water to flow.



**Go natural!** Use products with natural ingredients whenever possible. Use toxic substances like mothballs and insect sprays as little as possible.

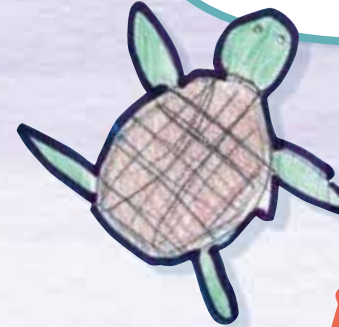


**Plant trees and flowers!** By planting trees or flowers around your home it will make it more difficult for chemicals to drain into the water supply.



# GREEN CITY, CLEAN WATERS

## 2017 Art Contest



Teachers of winning students receive Gift Cards!



Brought to you by:

**PHILADELPHIA WATER**  
EST. 1801

Partnership for the **DELAWARE ESTUARY**

Let your art be seen on Philly streets! First place WINNERS artwork will be placed around storm drains in the city!

## Contest Rules

### Who Can Enter?

This contest is open to all students in grades K-12 that attend public, private, or home school within the City of Philadelphia. Only one entry may be submitted per student.

### How to Enter?

Create an ORIGINAL drawing that shows how we can all help make Philadelphia a greener city with cleaner waters. From picking up after pets to putting litter in trash cans, there are many things we can do to keep dirty water out of Philadelphia's rivers.

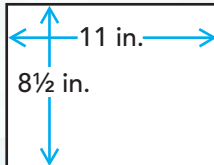
### Requirements

Each entry MUST have a copy of the Official 2017 Green City, Clean Waters Art Contest Entry Form filled out legibly and entirely. Tape or glue the form to the back of your drawing – NO staples please.

### Criteria for Artwork

#### Page Orientation and Type

Artwork must be HORIZONTAL and on an 8 1/2 x11 inch sheet of paper with no lamination or protruding parts



#### No Trademarks

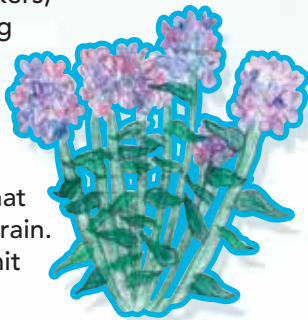
Please do not use any trademarked phrases, logos, or images (for example "Just Do It", Coca Cola or Philly Phanatic)

#### Medium

Use any medium — crayons, markers, paint — but please no protruding parts! For street displays and the calendar, color artwork is preferred but not required.

#### Message

Artwork should teach or show that only rain goes down the storm drain. If words are necessary please limit them to no more than 5.



## Winners!

Three winning drawings are selected from four grade groups: K-2, 3-5, 6-8, and 9-12.

Prizes for winning drawings are:

- 1st Place: \$100 Gift Card
- 2nd Place: \$75 Gift Card
- 3rd Place: \$50 Gift Card

First place drawings (one from each group) will be digitally enhanced and enlarged to be applied to the streets of Philadelphia to act as a visual reminder that **only rain should go down the storm drain**. Winning drawings will also be made into advertisements and used on SEPTA buses and will be featured in a 2017-2018 calendar.

All students with winning drawings will receive prizes at an Awards Ceremony in the spring of 2017! All students and teacher who enter the Art Contest will receive a 2017-2018 Philadelphia Art Contest calendar.

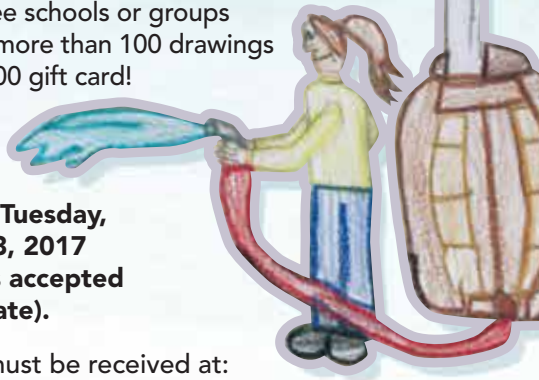
Teachers of winning students each receive a \$50 Gift Card.

The first three schools or groups that submit more than 100 drawings receive a \$100 gift card!

### Deadline!

**Deadline is Tuesday, February 28, 2017 (NO entries accepted after this date).**

All entries must be received at:  
Partnership for the Delaware Estuary  
110 S. Poplar Street, Suite 202  
Wilmington DE 19801



## Official 2017 Green City, Clean Waters Art Contest Entry Form

Student Name: \_\_\_\_\_

Age: \_\_\_\_\_ Grade: \_\_\_\_\_

Home Address: \_\_\_\_\_

\_\_\_\_\_

\_\_\_\_\_

\_\_\_\_\_

Home Phone: \_\_\_\_\_

How does your artwork show how to keep Philadelphia's water clean? \_\_\_\_\_

\_\_\_\_\_

\_\_\_\_\_

\_\_\_\_\_

\_\_\_\_\_

\_\_\_\_\_

### School or Organization Information:

Fill out this section if your artwork is done as part of a class, after school, or extracurricular activity with a group. Teachers — save time by filling out this information prior to photocopying the form!

School or Organization Name: \_\_\_\_\_

\_\_\_\_\_

School or Organization Address: \_\_\_\_\_

\_\_\_\_\_

\_\_\_\_\_

\_\_\_\_\_

Teacher: \_\_\_\_\_

Teacher's Email: \_\_\_\_\_

Teacher's Phone: \_\_\_\_\_

**Psst...Pass it on! Please share this announcement with other educators. Questions? Call 1-800-445-4935, ext. 112.**