



What Is Delaware Stream Watch?

- Grassroots, volunteer program
- Statewide
- Citizen monitoring
- Education
- Founded in 1985

DELAWARE
NATURE
SOCIETY



Technical Monitoring



- Supported by local industry
- Rigorous - Quality Assurance Project Plan
- Christina River Basin - 38 locations, monthly schedule
- Mispillion Watershed - 5 locations
- Appoquinimink Watershed – 5 locations
- Total Maximum Daily Load (TMDL)
- Data available to public as well

Citizen Science



- Volunteers Perform All Tests
- Tests
 - Dissolved Oxygen
 - Meter
 - Conductivity
 - Meter
 - pH, Alkalinity, Nitrates, & Orthophosphate
 - Field Kits
 - Other Measurements
 - Temperature
 - Depth
 - Turbidity
 - Salinity
 - Flow
 - 2 times per year

How Did it Happen?

- Volunteer Driven
- 2 years volunteers monitored same sites as State
- A Quality Assurance Project Plan (QAPP) was written in accordance with EPA regulations and State approved
- Continue to update quality control methodology

Partnerships



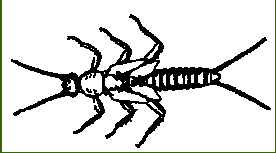
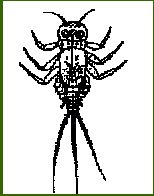
- Both with the State and Local industry & businesses
- Enabled us to leverage additional funds
- Improve Relationships & Standing in the Community



The Challenges in Sustaining A Successful Monitoring Program

- How to keep volunteers active & engaged
- Keeping the program strong & focused
- Expand the program

How to Keep Program Strong & Focused



Volunteers are #1



How to Maintain a Successful Program



Thank You!



Ginger North

Stream Watch Coordinator

P.O Box 700

Hockessin DE 19707

Phone 302 239 2334 x 100

ginger@delawarenaturesociety.org

DELAWARE
NATURE
SOCIETY



Educating Today, Preserving for Tomorrow