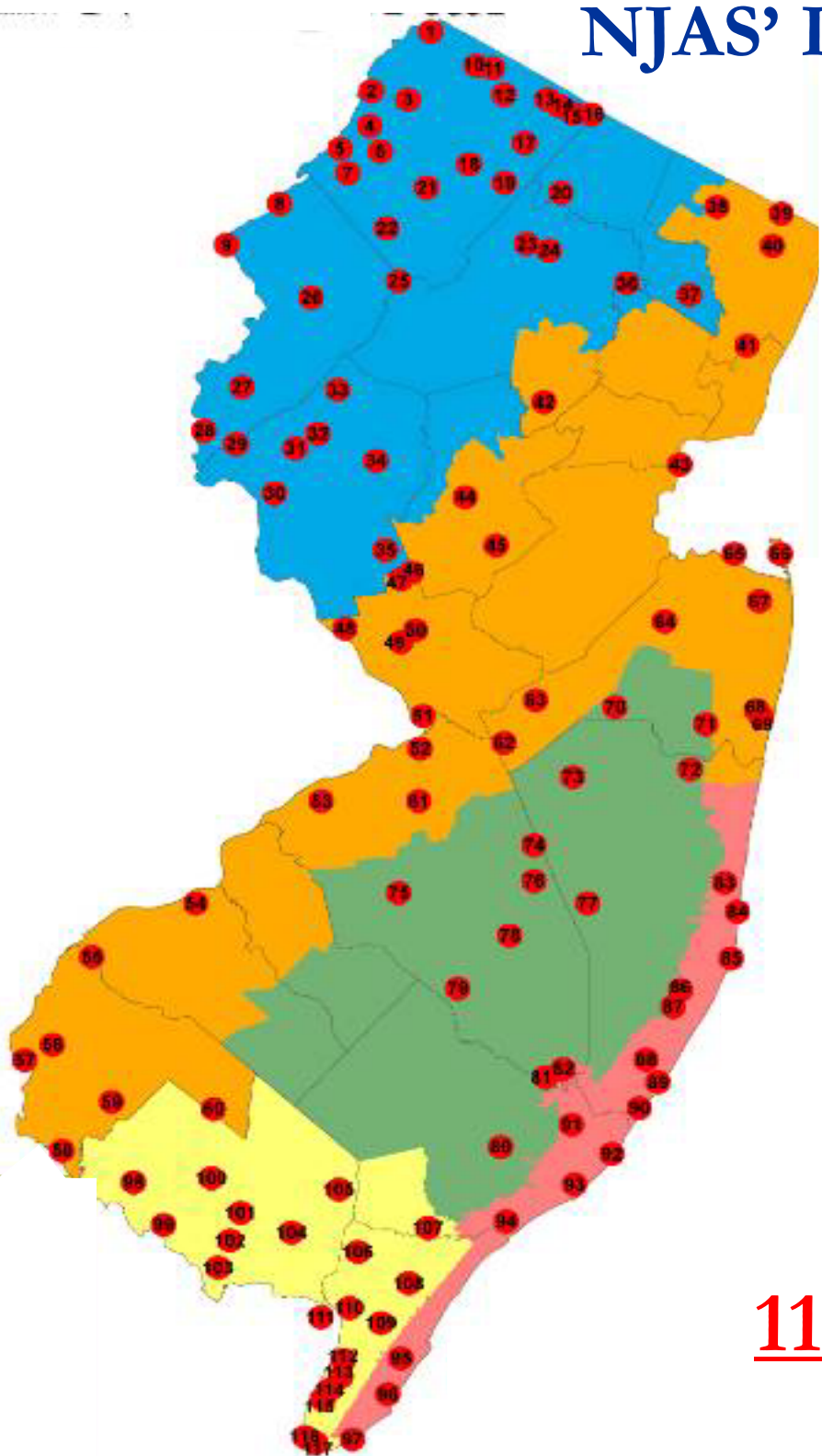


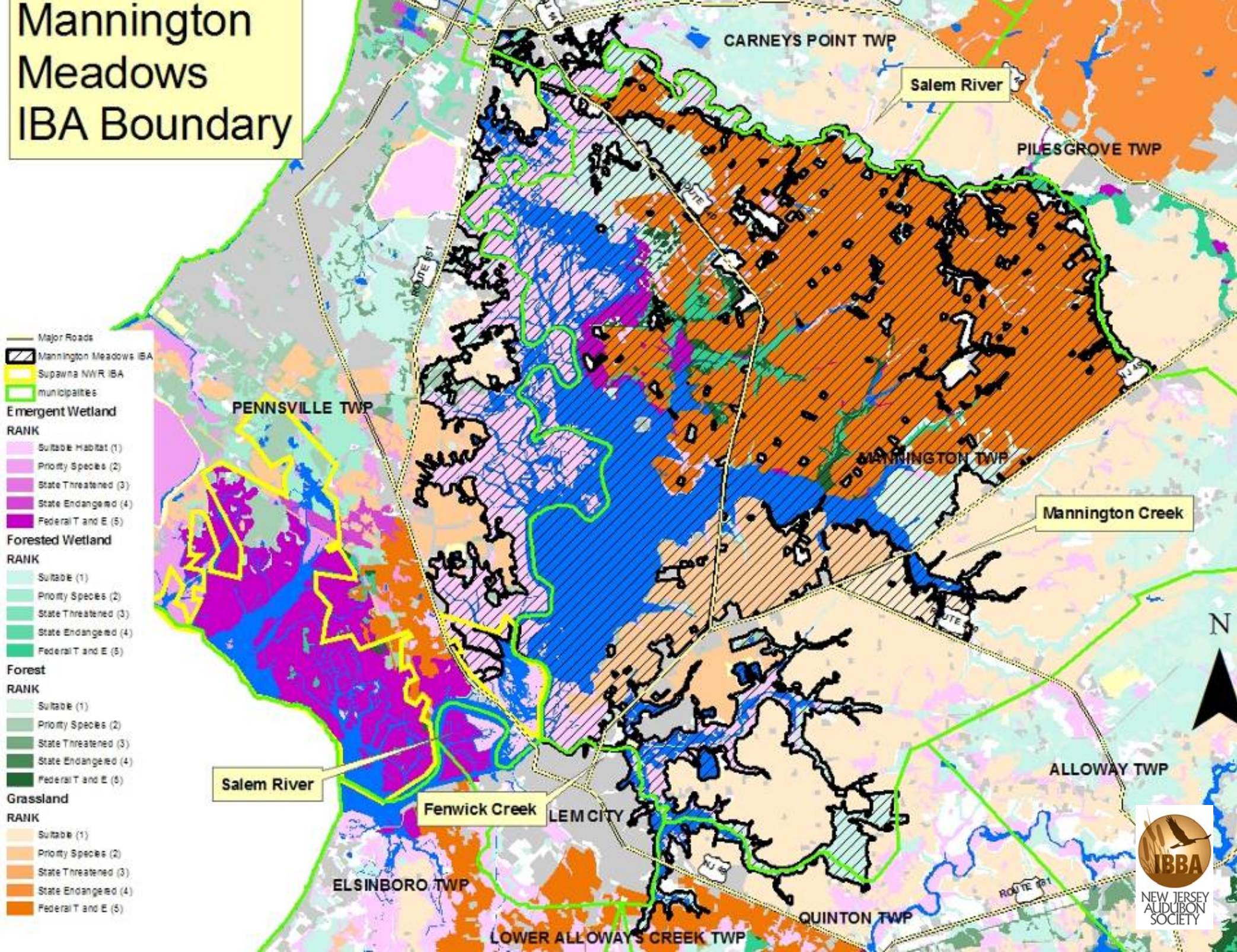
NJAS' Important Bird and Birding Areas (IBBA) Program



- Site-based conservation
- Science-based criteria/priorities
- Community involvement promotes local stewardship & advocacy
- Informs policy and encourages action from stakeholders

117 IBAs in NJ

Mannington Meadows IBA Boundary

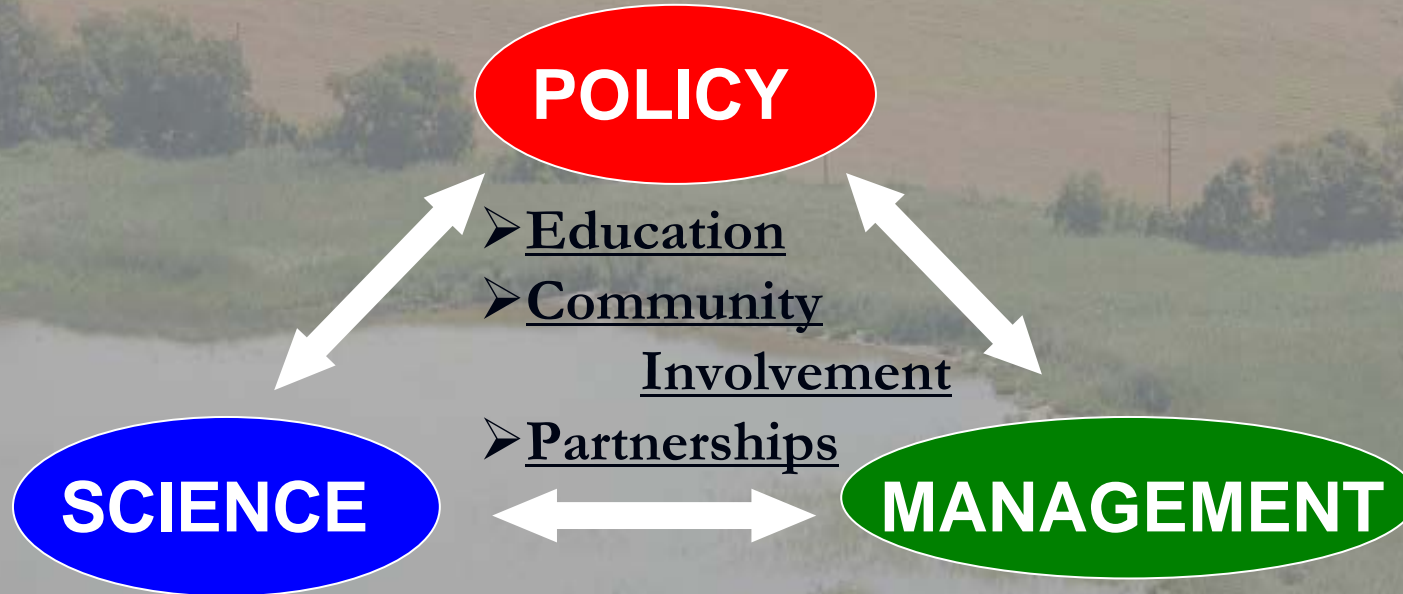


- Major Roads
 - Mannington Meadows IBA
 - Supawna NWR IBA
 - municipalities
- Emergent Wetland RANK**
- Suitable Habitat (1)
 - Priority Species (2)
 - State Threatened (3)
 - State Endangered (4)
 - Federal T and E (5)
- Forested Wetland RANK**
- Suitable (1)
 - Priority Species (2)
 - State Threatened (3)
 - State Endangered (4)
 - Federal T and E (5)
- Forest RANK**
- Suitable (1)
 - Priority Species (2)
 - State Threatened (3)
 - State Endangered (4)
 - Federal T and E (5)
- Grassland RANK**
- Suitable (1)
 - Priority Species (2)
 - State Threatened (3)
 - State Endangered (4)
 - Federal T and E (5)



Implementing the IBA Model – *The Mannington Meadows IBA*

- Site Protection & Advocacy
 - Farm Bill & Farmland Preservation
 - TDR Study – ERI
 - Threat Assessment
 - Land Acquisition



- Site Identification
- Identify Priorities
- Develop Conservation Plan
- Monitoring
- Habitat Stewardship
- Assess Management Impacts

- Implementing Conservation Plan/Conservation Actions
 - Riparian Restoration
 - Grassland Management