

Delaware Estuary Science Conference '05



Goals:

- Assess knowledge
- Assess science and management needs

Participation:

Hundreds, 10 States
>240 Presentations
to date



**White Paper on the Status and Needs
of Science in the Delaware Estuary**

*A Publication of the
Partnership for the Delaware Estuary
A National Estuary Program*

www.DelawareEstuary.org



PDE Science

1. Conferences & Workshops

- Delaware Estuary Science Conference
- Workshops

2. Science and Technical Committees

- STAC
- Workgroups and Subcommittees

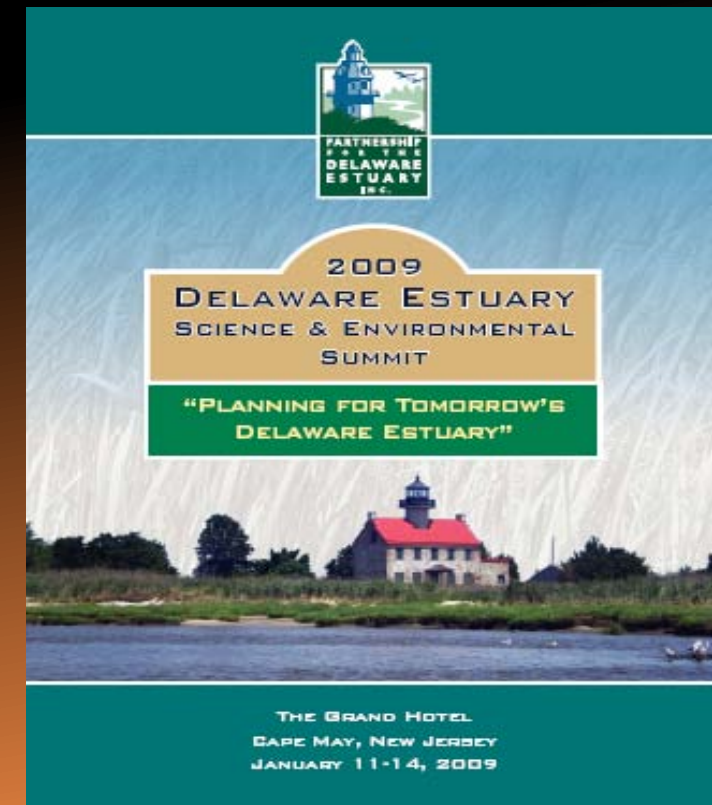
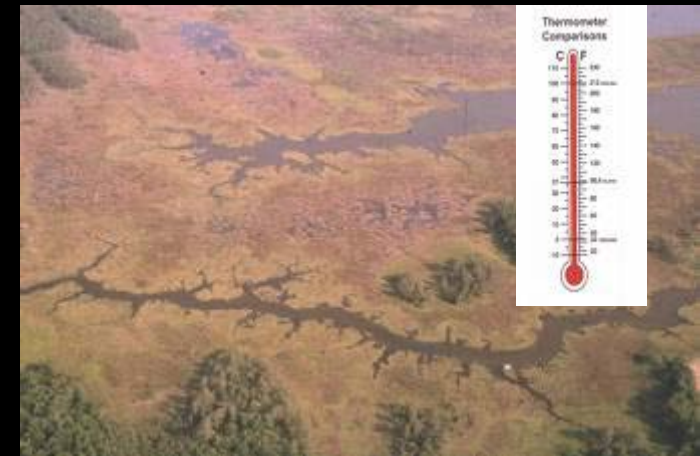
3. Watershed-Level Initiatives

- Science Priority Setting (White Paper)
- Indicators, Goals, Monitoring
- State of the Estuary
- Climate Adaptation
- Regional Restoration

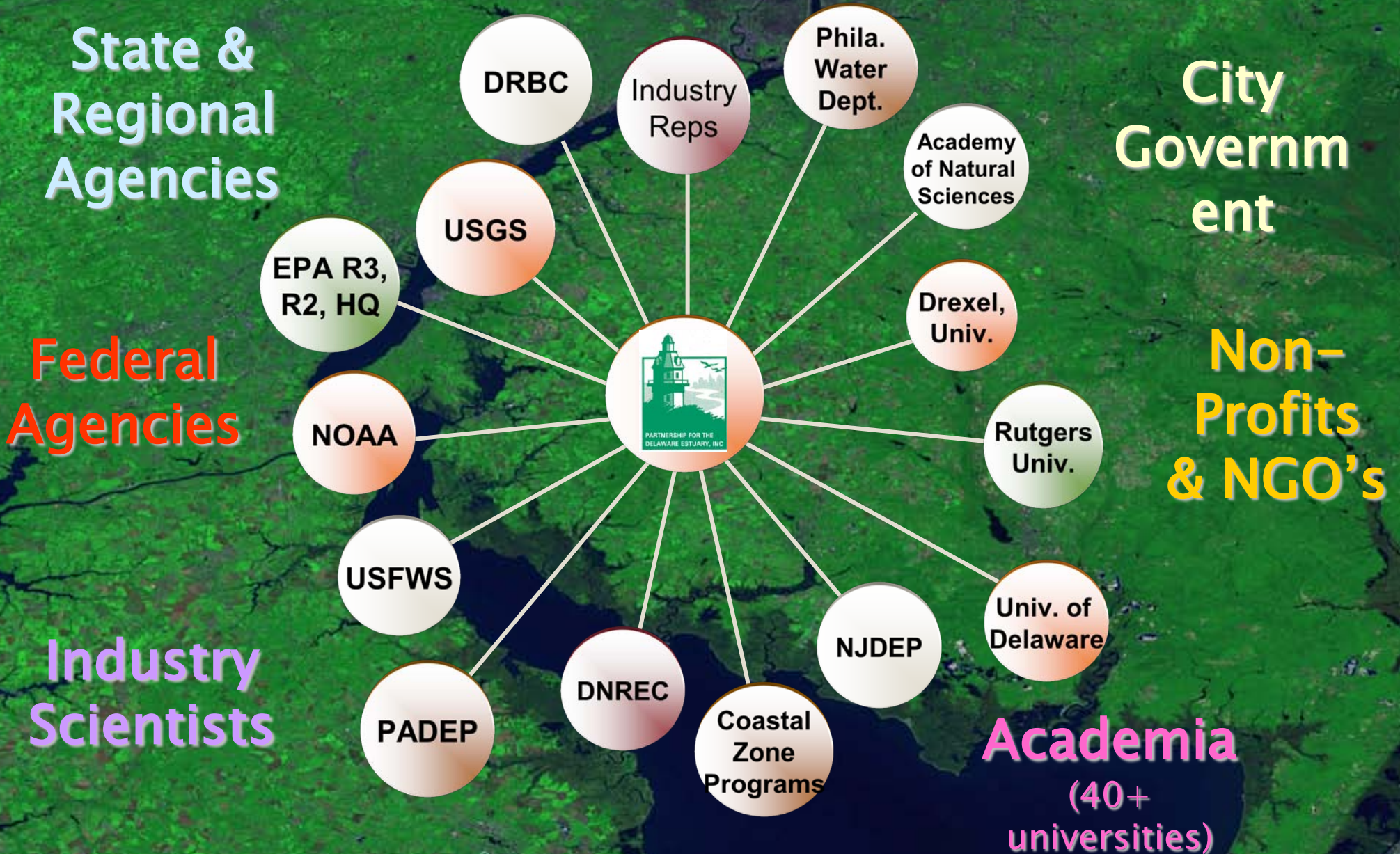
4. Science & Restoration Projects

- 4. Benthic Inventory, Vegetation Classification
- Freshwater Mussel Recovery Program
- Oyster Revitalization
- Living Shorelines
- Wetland Monitoring

5. Web-Based Info & Data Management



PDE Science Sectors



Adaptive Management



Activities

Products

Intakes



Processing



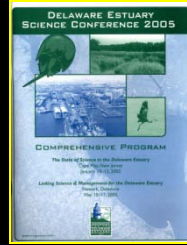
Synthesis



Planning, Peer Review



Applications



Example Matrix for Conceptual Model - Delaware Estuary Ecosystem

		Nontidal		Tidal	
		Freshwater	Freshwater	Brackish	Bay
Pelagic	Physical				
	Chemical				
Benthic	Physical				
	Chemical				
Socioeconomic					



Science Conference



Proceedings



Assess Needs, White Paper



STAC, TWG's



Monitoring

Indicators & Goals

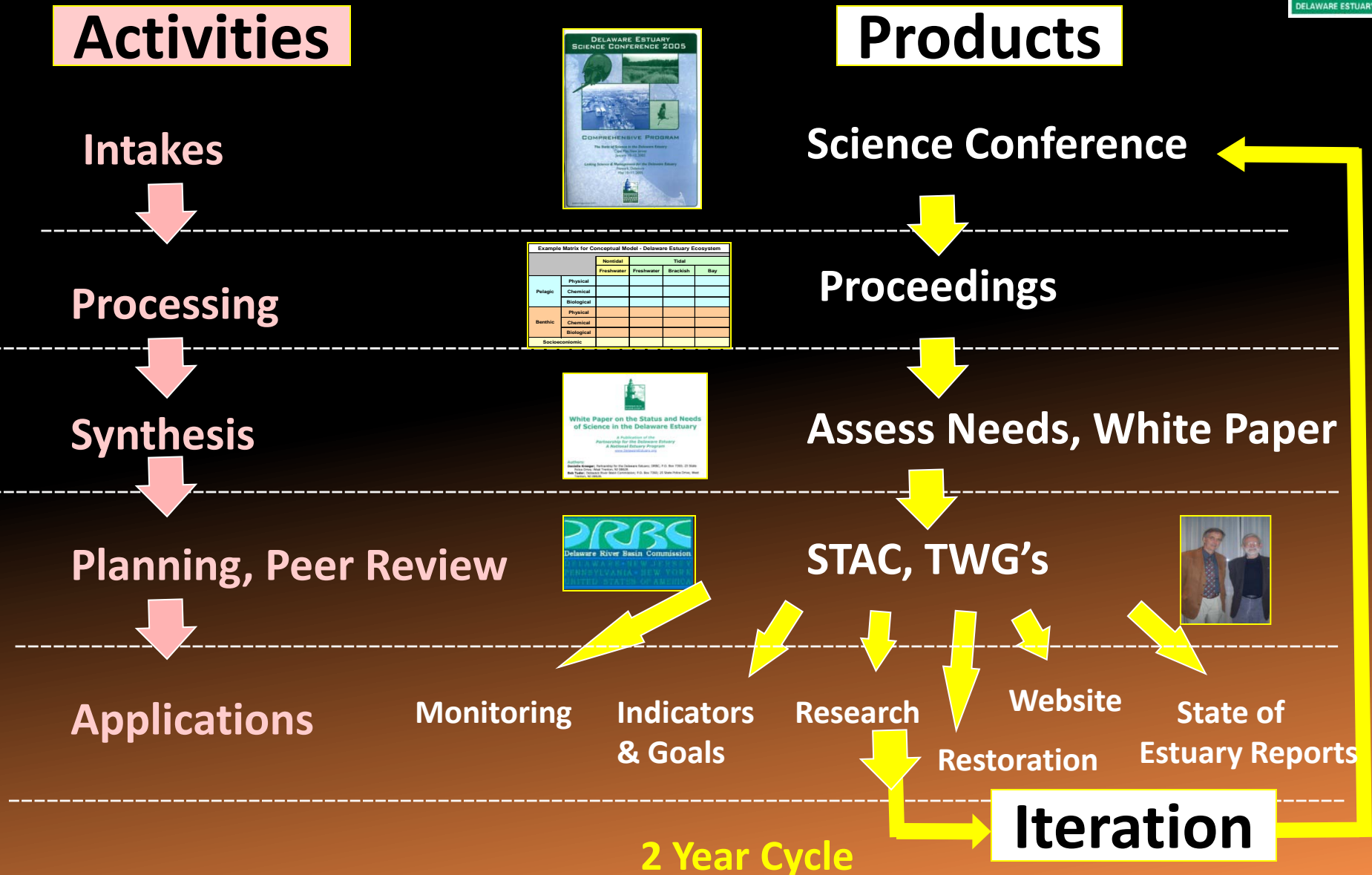
Research

Website
Restoration

State of
Estuary Reports

Iteration

2 Year Cycle





Science & Environmental Summit

2005 (2-part)

The State of Science in the Delaware Estuary

Linking Science and Management for the Delaware Estuary

2007

Linking Science , Management and Policy to Set Goals

2009

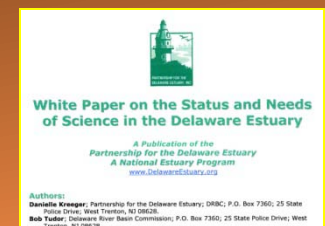
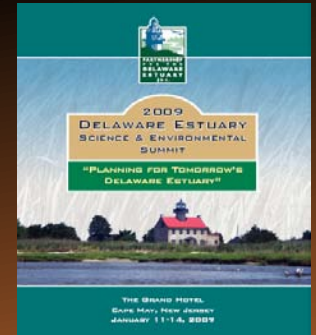
Planning for Tomorrow's Delaware Estuary

2011

Connections – Land to Sea, Shore to Shore, & Science to Outreach

2013 ?

2015 *10 Year Anniversary – Repeat White Paper?*





What Makes the Summit Special ?

Watershed-Based

Few Meetings focus on a system, irrespective of geopolitical boundaries

Predictable, Opportunity for Sharing Fresh Outcomes

Two year cycle lends itself to reporting out

Cross-Sector, Inclusive

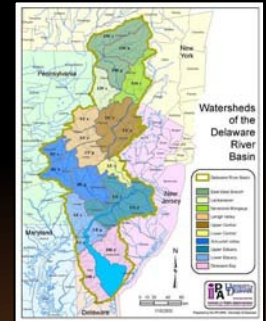
Hundreds of environmental professionals that don't normally interact

Economical

Reasonable costs compared to other conferences, allows more to participate

Retreat Format and Venue

Out of Commuting Range, Friendly , Organized – Promotes Exchange



Delaware Estuary Science & Environmental Summit 2013

The Delaware Estuary
2007 JOINT MEETING

DELAWARE ESTUARY SCIENCE CONFERENCE
Linking Science, Management and Policy to Set Achievable Environmental Goals in the Delaware Estuary

DELAWARE ESTUARY ENVIRONMENTAL SUMMIT

CAPE MAY GRAND HOTEL
CAPE MAY, NEW JERSEY
JANUARY 22-24, 2007

The Delaware Estuary
SCIENCE & ENVIRONMENTAL SUMMIT 2009
"PLANNING FOR TOMORROW'S DELAWARE ESTUARY"
THE GRAND HOTEL, CAPE MAY, NEW JERSEY

PROGRAM SUMMARY AND ONLY CALL FOR PAPERS

Calling all environmental scientists, educators, practitioners, resource managers, environmental organizations, students, and concerned citizens... The third biennial Delaware Estuary Science & Environmental Summit will take place on **January 11-14, 2009**.

The theme of the 2009 meeting will be "Planning for Tomorrow's Delaware Estuary" building on the success of the 2005 Science Conference and Environmental Summit ("Setting the Course for Environmental Goals"). Bringing together environmental stakeholders from across the Estuary region, the 2009 Summit will emphasize the importance of regional, local government, scientist, educator and citizen taking a coordinated, ecosystem-based approach to environmental management, education, conservation, and monitoring.

Climate change, sea level rise, the loss of natural levels, freshwater availability and constraints of emerging stream are examples of challenges that will require smart solutions implemented by diverse sectors working together. The watershed based Delaware Estuary Science & Environmental Summit provides an important venue for the exchange of information and ideas among sectors and individuals with diverse expertise and perspectives.

More than 100 presentations were given at each of the 2005 and 2007 Conferences, with attendees from 10 states. For the 2009 meeting, afternoon sessions are planned covering ecology, environmental science, ecosystem health, natural resource management, education, outreach, messaging and on-the-ground projects. The 2008 State of the Estuary report and other "hot topics" will be covered in special sessions that will engage regular attendees, ensuring the every participant and presenter will find something of interest.

Please visit www.DelawareEstuary.org for up-to-date Science & Environmental Summit details.

Abstract Program

DELAWARE ESTUARY SCIENCE & ENVIRONMENTAL SUMMIT 2011
"Connections — Land to Sea, Shore to Shore & Science to Outreach"
January 30 – February 2, 2011
Cape May, New Jersey

For more information visit: www.DelawareEstuary.org

- Location: The Grand Hotel, Cape May, NJ
- Target Dates: January 27 - 30

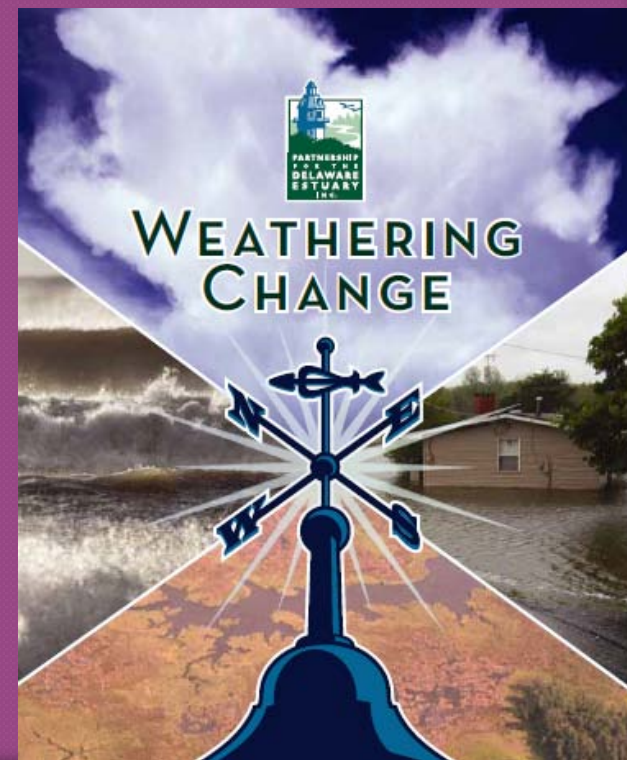


Past Themes:

- 2011 Connections – Land to Sea, Shore to Shore & Science to Outreach
- 2009 Planning for Tomorrow's Delaware Estuary
- 2007 Linking Science, Management & Policy to Set Achievable Environmental Goals in the Delaware Estuary
- 2005 Wksp 1 The State of Science in the Delaware Estuary
- 2005 Wksp 2 Linking Science & Management for the Delaware Estuary

2013 Theme ?

- Weathering Change – Shifting Environments, Shifting Politics, Shifting Needs
- Headwater Streams to the Bay
- Healthy Stream, Healthy Bays
- Turning/Change Tides
- Surging Forward
- Other Suggestions ???



Keynote/Plenary Speaker Suggestions?



- Hurricane Schwartz
- Erik Eckle – Water Words that Work
- Michael Rockland –
Snowshoeing through Sewers Author
- Christopher Swain – Founder,
Swim for Clean Water

Future Thoughts

Contact

Danielle

dkreeger@DelawareEstuary.org

or

Lisa

LWOOL@DelawareEstuary.org

