

**Official 2010
Protect Philadelphia's Hidden Streams
Art Contest Entry Form**

Student Name: _____

Age: _____ Grade: _____

Home Address: _____

Home Phone: _____

What is the message in your artwork? _____

SCHOOL INFORMATION:

Fill out this section **ONLY** if your artwork is done as a school project or assignment. Teachers — save time by filling out this information prior to photocopying the form!

School Name: _____

School Address: _____

Teacher: _____

Teacher's Email: _____

Teacher's Phone: _____



Winners!

Three winning drawings are selected from four grade groups: K-2, 3-5, 6-8, and 9-12.

Three winning videos are selected from the 6-12 grade group.

Prizes for winning drawings and videos are:

1st: \$100 Gift Card

2nd: \$75 Gift Card

3rd: \$50 Gift Card

All four first place drawings (one from each grade group) will be used on SEPTA buses to promote messages about protecting Philadelphia's hidden streams. All winning drawings will be featured in a 2010-2011 calendar and will be displayed at the Philadelphia International Airport's Youth Art Gallery starting in January of 2011! Many Honorable Mentions will also be featured in the Airport's display.

All three winning videos will be featured on all of the following websites:

Partnership for the Delaware Estuary

www.DelawareEstuary.org

Philadelphia Water Department Office of Watersheds

www.phillywatersheds.org

Fairmount Water Works Interpretive Center

www.fairmountwaterworks.com

All twelve students with winning drawings and all three students with winning videos will receive prizes at an Awards Ceremony in the spring of 2010!

Teachers of winning students each receive a \$25 gift card.

All students who enter the Art Contest will receive a copy of the 2010-2011 calendar.

**Protect
Philadelphia's
Hidden Streams
2010
Art Contest**

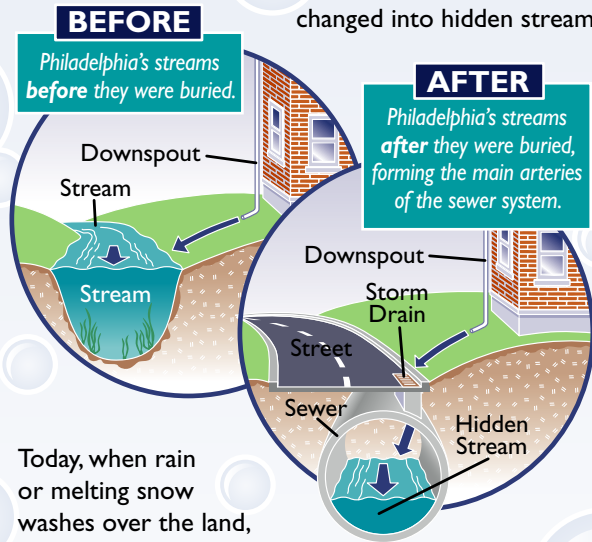


Brought to you by:



What are Philadelphia's Hidden Streams?

Philadelphia's Hidden Streams are the man-made streams buried beneath the streets of Philadelphia. Until about one hundred years ago, many natural streams were buried for the good of the people — to carry away wastewater and to contain floods. By burying them, the natural streams were changed into hidden streams.



Today, when rain or melting snow washes over the land, it carries with it pollutants such as oil from leaking cars, pet waste and litter. These pollutants wash into Philadelphia's hidden streams, which then flow into the City's remaining natural streams, including the Schuylkill and Delaware Rivers. These pollutants threaten the health of Philadelphia's hidden streams as well as the City's remaining natural streams.

NEED INSPIRATION FOR THE CONTEST?

The next time it's raining, ask an adult to take you outside. Follow the path of the water from your house or school and see where it takes you! What color is the water? Do you see anything being carried in it? Where did the water end up? Enjoy your wet and wild adventure!

Contest Rules

WHO CAN ENTER?

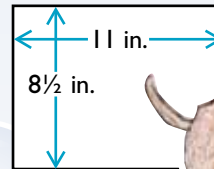
This contest is open to all students in grades K-12 that attend public, private, or home school within the City of Philadelphia. Only one entry per student.

WHAT DO YOU DO?

Create an ORIGINAL work of art showing how we can all help protect Philadelphia's hidden streams, being sure to follow the criteria. If you choose to create a video, don't forget to follow this year's video theme.

CRITERIA FOR DRAWINGS:

Page Orientation and Type
Artwork MUST be HORIZONTAL and on an 8½ x 11 inch sheet of WHITE paper with no lamination or protruding parts.



No Words or Labeling

No poster-style work, words, or labeled objects — let your art tell the message without words. Use the space provided on the entry form if you want to explain your drawing. Words like “Stop” on a stop sign, “soda” on a can, etc. are permitted.

Media

Use crayon, marker, paint, color pencils, and/or magic markers. For calendar production purposes, color artwork is preferred (but not required) over black and white. No computer-generated artwork.

REQUIREMENTS

Each entry MUST have a copy of the Official 2010 Protect Philadelphia's Hidden Streams Art Contest Entry Form filled out legibly and entirely. Tape or glue the form to the back of your drawing — no staples please. For videos, include the form in the envelope with your CD and don't forget to label your CD!

CRITERIA FOR VIDEOS:

Theme

This year we're asking you to create a video showcasing what pet waste is “doo-ing” to our water and how pet owners can help by picking up after their pets and properly disposing of waste. For more information, please visit http://www.delawareestuary.org/learn_publications_studies_reports.asp, download “A Homeowner's Guide to Stormwater Management” and reference the section on pet waste.

Length

Videos must be less than 30 seconds in length.

Format

Videos must be on a CD and in MOV or WMV format. No flash drives / jump drives or electronic submissions please (for example, email, website links, etc.!).

Safety

Make sure that no animals, humans, or the environment are harmed in the making of your video.

Label

In permanent marker, please clearly print on your CD the following: your name, phone number, age and grade. Include a completed official 2010 Art Contest Entry Form in the envelope with your CD.

DEADLINE!

All entries for drawings or videos must be received at:
Partnership for the Delaware Estuary
One Riverwalk Plaza
110 S. Poplar Street, Suite 202
Wilmington, DE 19801

By Friday, March 5, 2010

(NO entries accepted after this date).



Psst...Pass it on! Please share this announcement with other educators. Questions? Call 1-800-445-4935, ext. 112.