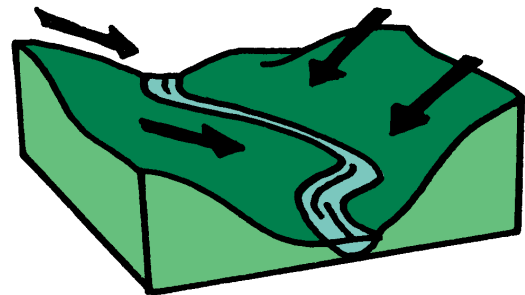


Let's Learn About Wilmington's Waterways!



Q. What's a WATERSHED?

A. The WATERSHED of a stream is all of the land that sheds water into that stream when it rains. When rain falls on land, it drains or runs off to the nearest stream or river that is downhill.



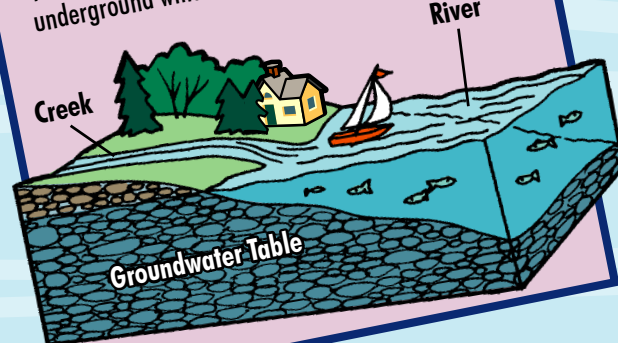
How Can You and Your Family Protect Our Water?

Hey Kids! Protecting our drinking water isn't just an adult thing. It's up to each and every one of us! Storm drains in the street (also called sewer inlets) are for water only. Rain and melting snow pick up all kinds of pollutants such as leaked motor oil, animal waste, and trash as they wash over our sidewalks, streets, and yards. All of this dirty water flows into storm drains, many of which empty into local creeks and into the Delaware River. You can help make our waterways safer for drinking, fishing, and boating by keeping pollution and trash out of storm drains.

Did you know a long time ago people built their outhouses on stilts directly over waterways, and factories were allowed to dump their waste directly into local creeks? Now that is against the law, and the creeks are much cleaner.



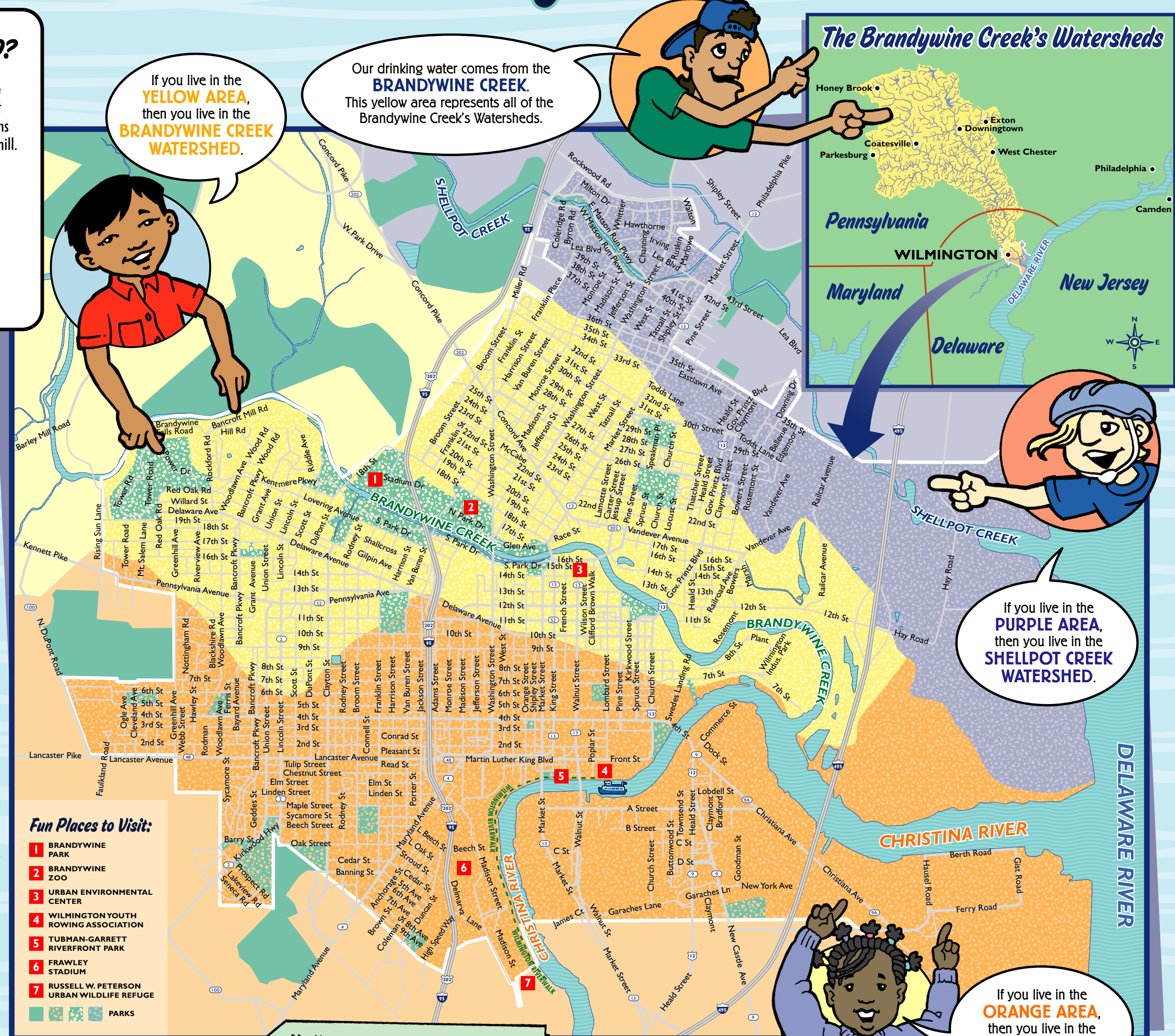
Did you know that the water you drink and bathe in comes from the Brandywine Creek or streams and reservoirs that flow into the Creek? In some towns people also get their tap water from water trapped underground which is called the groundwater table.



Did you know that when it rains pet waste washes off our yards, sidewalks, and streets into storm drains, ending up in the river? Clean up after your pets!



Did you know that litter from the streets washes into storm drains when it rains and ends up in the river? Be sure to put trash in trash cans, not in the street!



If you live in the **YELLOW AREA**, then you live in the **BRANDYWINE CREEK WATERSHED.**

Our drinking water comes from the **BRANDYWINE CREEK.** This yellow area represents all of the Brandywine Creek's Watersheds.

The Brandywine Creek's Watersheds



If you live in the **PURPLE AREA**, then you live in the **SHELLPOT CREEK WATERSHED.**

If you live in the **ORANGE AREA**, then you live in the **CHRISTINA RIVER WATERSHED.**



My Home Address is: _____

My Watershed Address is: _____



City of Wilmington
Louis L. Redding City/County Building
800 French Street
Wilmington, DE 19801-3537
(302) 576-2489
www.WilmingtonDE.gov

Partnership for the Delaware Estuary
One Riverwalk Plaza
110 S. Poplar Street, Suite 202
Wilmington, DE 19801
(800) 445-4935
www.DelawareEstuary.org

The Partnership for the Delaware Estuary leads collaborative and creative efforts to protect and enhance the Delaware Estuary and its tributaries for current and future generations.
© 2009 Designed and Illustrated by Frank McShane. Printed on Recycled Paper.