

# The Delaware Estuary

**Q.** What exactly is the DELAWARE ESTUARY?

**A.** The Delaware Estuary includes portions of Pennsylvania, New Jersey and Delaware and stretches approximately 133 miles from the falls of the Delaware River at Trenton, NJ, and Morrisville, PA, south to the mouth of the Delaware Bay between Cape May, NJ, and Cape Henlopen, DE. The largest tributary to the Delaware Estuary is the Schuylkill River.

Estuaries are areas where salt water from the sea mixes with fresh water flowing off the land. They are among the most productive habitats on earth and are vital spawning, nursery, and feeding grounds for fish and shellfish. They also support wading and migratory birds, reptiles, and mammals. Estuary wetlands filter pollutants and sediments from the land and serve as buffers that protect land from flooding and erosion.

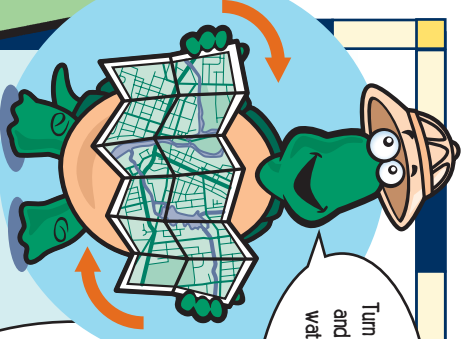
**Q.** What's a WATERSHED?

**A.** The WATERSHED of a stream is all of the land that sheds water into that stream when it rains. When rain falls on land, it drains or runs off to the nearest stream or river that is downhill.



**Q.** What did the ocean say to the beach?

**A.** Nothing. It just waved.



Turn this map 90° clockwise and see if you can find the watershed that you live in!

If you live in this yellow-green area, you live in the NAAMANS CREEK WATERSHED. This creek is mostly underground, just like the Shellpot Creek. If you live in the purple area, you live in the SHELLPOT CREEK WATERSHED.

If you live in Wilmington, you live in one of three watersheds. The western part of the city (shown in lighter purple) is in the SHELLPOT CREEK WATERSHED. The central part of the city (shown in lighter green) is in the BRANDYWINE CREEK WATERSHED. And the eastern part of Wilmington (shown in lighter yellow) is in the CHRISTINA RIVER WATERSHED.

Residents of New Castle live in the ARMY CREEK WATERSHED. Most of the residents of Delaware City live in the DRAGON RUN CREEK WATERSHED, but if you live in the eastern part of the city (shown in lighter blue-green) you live in the CHESAPEAKE AND DELAWARE CANAL WATERSHED.

If you live in Dover, you live in one of two watersheds. The western part of the city (shown in lighter gray) is in the LITTLE CREEK WATERSHED. The eastern part of the city (shown in lighter green) is in the ST. JONES RIVER WATERSHED.

My Home Address is:

My Watershed Address is:

If you live down in Georgetown, you live in one of two watersheds. The western part of the city (shown in lighter yellow) is in the INDIAN RIVER WATERSHED. The eastern part of the city (shown in lighter green) is in the DEEP CREEK WATERSHED.

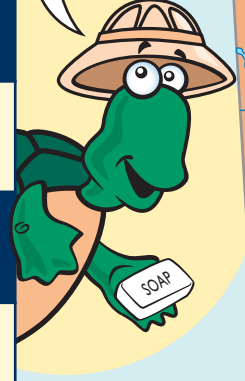
If you live in Newark, you live in either of two watersheds. The western part of the city (shown in lighter gray) is in the WHITE CLAY CREEK WATERSHED.

The eastern part of the city (shown in lighter yellow) is in the CHRISTINA RIVER WATERSHED.

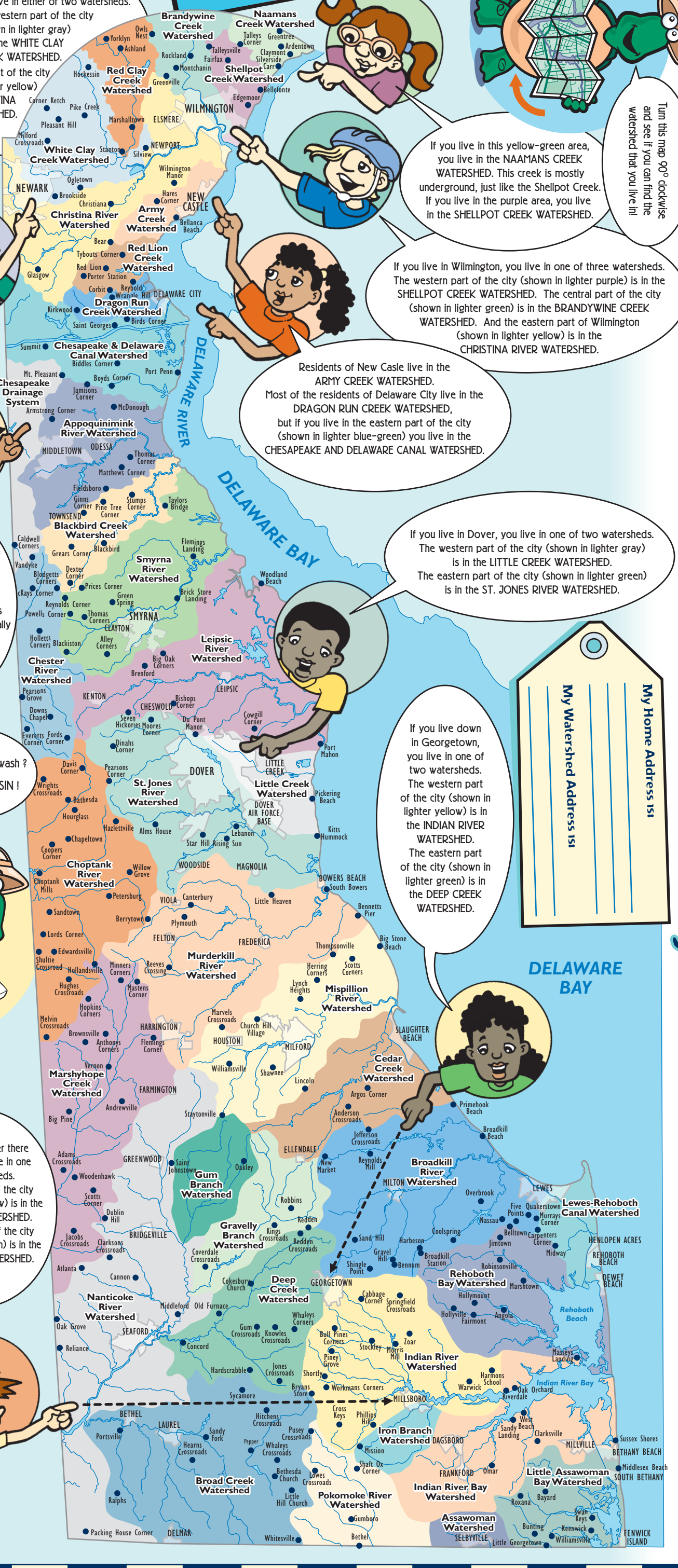
This gray portion of the map is a part of the CHESAPEAKE DRAINAGE SYSTEM, the water that drains from this area eventually will end up in the Chesapeake Bay.

**Q.** Where do fish wash?

**A.** In a RIVER BASIN!



If you live way over there in Millsboro, you live in one of two watersheds. The northern part of the city (shown in lighter yellow) is in the INDIAN RIVER WATERSHED. The southern part of the city (shown in lighter green) is in the IRON BRANCH WATERSHED.



# What's My Watershed Address?