

The Partnership for the Delaware Estuary Regional Restoration Initiative (RRI)



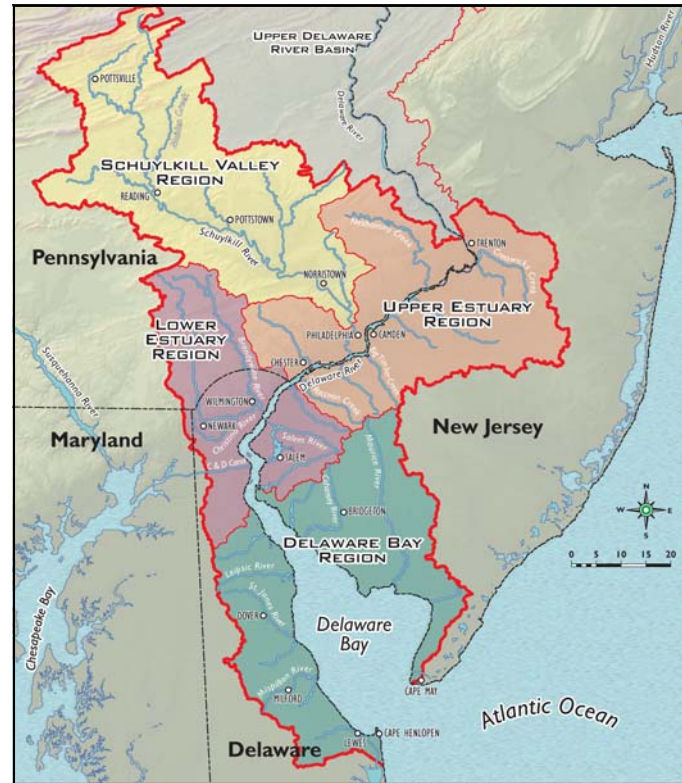
Project Registry

What is the Project Registry?

The PDE Project Registry, part of the overall Delaware Estuary Regional Restoration Initiative, identifies regional restoration needs and matches them with high impact projects and regional priorities.

The goals of the Project Registry are:

- to provide a comprehensive collection of projects that anyone can populate or query through an online web platform
- to increase the visibility of projects and assist funders in locating projects they wish to support.
- will serve as a tool to aid PDE and our many partners in making wise investments in the health and function of the Delaware Estuary.



Regional Restoration Initiative Case Studies:



Forested Headwaters /
Riparian Corridors



Urban Waterfronts



Shellfish and Other
Signature Species



Tidal Wetlands

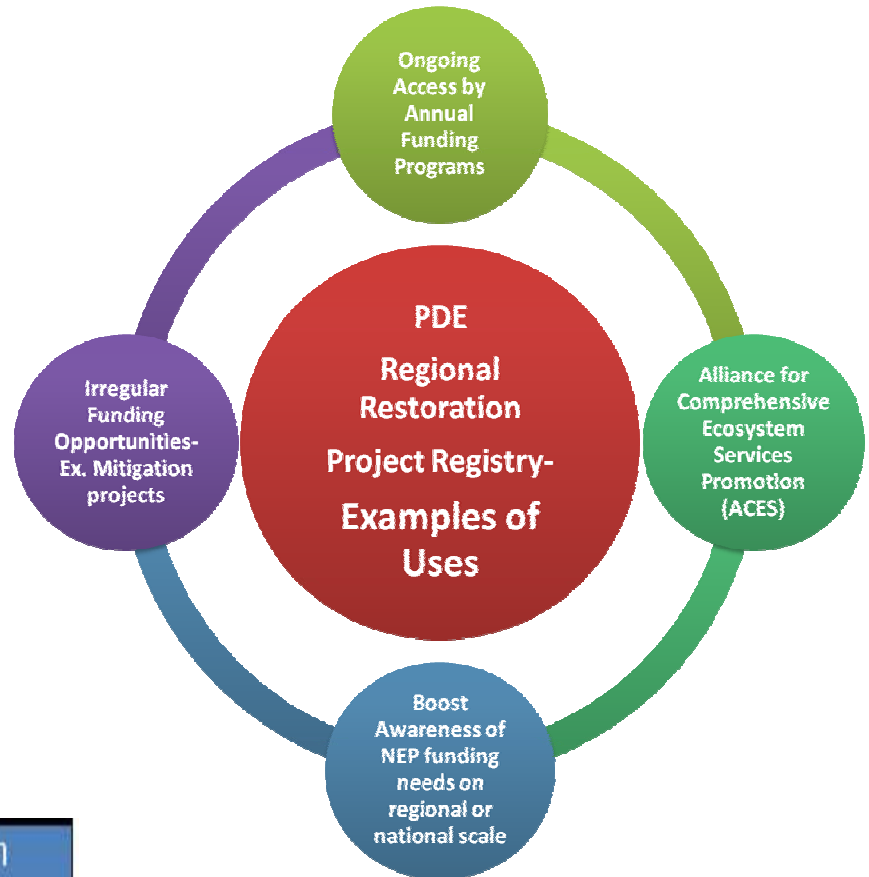
What types of projects are in the registry?

Geographic Range. Any project located in the Delaware River Basin can be contributed to the Registry. However, only projects located within or having significant impact to the Delaware Estuary Study Area (the lower 52% of the Delaware River Basin, which includes tidal waters from the head of tide on the mainstem Delaware River to the mouth of the Bay (see above map) will be eligible for PDE support/promotion beyond listing in the Registry.

Project Types. Projects can include traditional habitat restoration, enhancement, creation or protection activities. Although education, outreach, policy and research can be part of proposed projects, the focus must be to directly improve the quantity and/or quality of the Estuary's natural resources, including living resources, habitats and water. Initial case studies for the RRI focus on 4 priority habitat types pictured on the right (may change in the future).

What are the benefits of submitting projects to the registry?

- By participating in the Project Registry, agency and NGO's will attract potential funders for their projects.
- Pertinent project information will be made available through an interactive web-based platform housed at PDE, viewable by all interested parties.
- Some examples of how the registry will be used are shown in the diagram on the right.



Project Registry	Examples of Information in Registry
General Information	<ul style="list-style-type: none"> ✓ Project Status and Description ✓ Implementation start date ✓ Size of area directly manipulated ✓ Monitoring Plan
Contact Information	<ul style="list-style-type: none"> ✓ Name, address ✓ Agency/Organization/Project website ✓ Confidentiality
Geographic Location	<ul style="list-style-type: none"> ✓ Longitude/Latitude ✓ USGS Topographic Quad ✓ Watershed Subregion
Habitat Types and Acreage Restored	<ul style="list-style-type: none"> ✓ Habitat Activity Type (Enhancement, Protection, Establishment, etc.) ✓ Scale (acres, miles, linear feet, etc.) ✓ Species Affected
Project Budget	<ul style="list-style-type: none"> ✓ Original proposed project cost estimate ✓ Total cost estimate for monitoring

How do I get my projects in the registry?

- Interested parties are encouraged to submit project summaries using the Project Registry Submission Form found at:
http://www.delawareestuary.org/science_programs_regional_restoration.asp
- This webpage has all the project registry information such as how to submit your project, when to add/update projects, how to know if project was accepted, etc.
- Projects can be added to the registry at anytime, and the ACES call for project will occur every fall.
- Detailed project descriptions, proposals, or other supplemental documents may be submitted as attachments.

For questions, please contact PDE restoration specialist at lwhalen@delawareestuary.org or 302-655-4990 x107.